



FÄUSTEL / VORSCHLAGHÄMMER

HEAVY HAMMERS

KREUZSCHLAGHAMMER – ULTRATEC

STRAIGHT-PEEN SLEDGE HAMMER – ULTRATEC

Ultratec – geschmiedete Qualität – sorgfältig gehärtet und angelassen aus Stahl der Güte C 45

Ultratec – forged quality – made of carefully hardened and tempered C45 grade steel



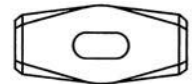
			98 / Ultratec Stiel / Ultratec handle		
🏋️ g	Artikelnr.		📦		
3000	5028983000		1		

KUPFERHAMMER – HICKORY

COPPER HAMMER – HICKORY

Fäustelform mit Hickorystiel

Small sledgehammer shape with hickory handle



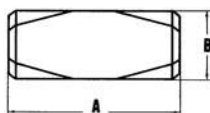
			03 / Hickorystiel / Hickory handle		
B mm	A mm	🏋️ g	Artikelnr.		📦
23	88	500	5065030500		1
30	82	600	5065030600		1
31	84	750	5065030750		1
36	91	1000	5065031000		1
42	108	1500	5065031500		1

KUPFERHAMMER – ULTRATEC

COPPER HAMMER – ULTRATEC

Fäustelform.

Club hammer shape.



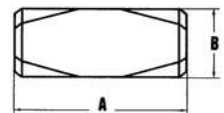
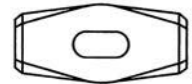
			98 / Ultratec Stiel / Ultratec handle		
B mm	A mm	🏋️ g	Artikelnr.		📦
22	72	400	5065980400		1
23	88	500	5065980500		1
30	82	600	5065980600		1
31	84	750	5065980750		1
36	91	1000	5065981000		1
42	108	1500	5065981500		1

KUPFERHAMMER – CARBOTEC

COPPER HAMMER – CARBOTEC

Fäustelform.

Club hammer shape.



			99 / Carbotec Stiel / Carbotec handle		
B mm	A mm	🏋️ g	L mm	Artikelnr.	
30	82	600	320	0365060701	
36	91	1000	326	0365100701	
42	108	1500	363	0365150701	