

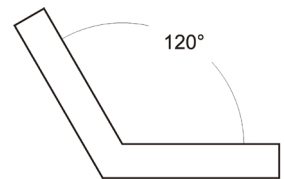
Sechskant-Winkel 120° ohne Anschlag

EX10

Hexagon square 120° without back

- Werksnorm
- 120°
- Normalstahl
- ohne Anschlag

- works standard
- steel square 120°
- carbon steel
- flat



Bestell-Nr. Order-No.	Abmessung Size mm	Euro/St. Euro/Pc.
03043000	50 x 50	16,50
03043001	75 x 75	20,00
03043002	100 x 100	24,00
03043003	150 x 150	35,00
03043004	200 x 200	38,00

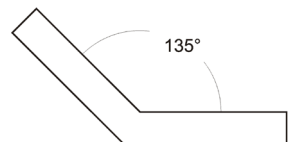
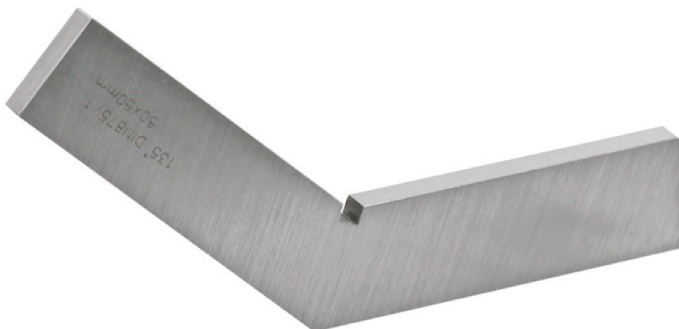
Achtkant-Winkel 135° ohne Anschlag

EX 11

Steel square 135° without back

- Werksnorm
- 135°
- Normalstahl
- ohne Anschlag

- works standard
- steel square 135°
- carbon steel
- flat



Bestell-Nr. Order-No.	Abmessung Size mm	Euro/St. Euro/Pc.
03043020	50 x 50	20,00
03043021	75 x 75	21,00
03043022	100 x 100	30,00
03043023	150 x 150	34,00
03043024	200 x 200	44,00