

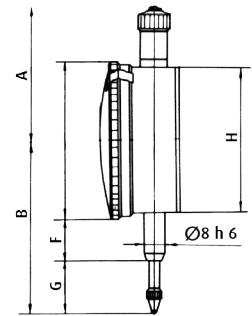
Dial indicator, range 30 mm or 50 mm, reading 0,01 mm

- Genauigkeit nach Werksnorm
- Metallgehäuse
- mit Toleranzmarken
- Einspannschaft 8 h6
- Ziffernblatt durch Außenring drehbar im Etui
- accuracy according to works standard
- metal casing
- with tolerance marks
- standard stem 8 h6
- dial face rotatable by outer ring in case



01024005

01024007

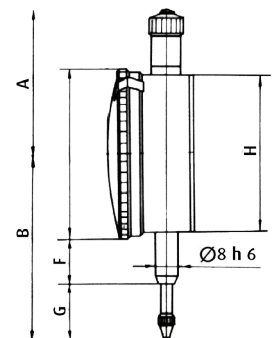


| Bestell-Nr.<br>Order-No. | Messbereich<br>Range mm | Ablesung<br>Reading mm | Genauigkeit<br>Accuracy $\mu\text{m}$ | Außenring<br>Bezel mm | A+B<br>mm | F<br>mm | G<br>mm | H<br>mm | Euro/St.<br>Euro/Pc. |
|--------------------------|-------------------------|------------------------|---------------------------------------|-----------------------|-----------|---------|---------|---------|----------------------|
| 01024005                 | 30                      | 0,01                   | 34                                    | 58                    | 122       | 18      | 33      | 53,5    | 62,00                |
| 01024007                 | 50                      | 0,01                   | 55                                    | 60                    | 261       | 58      | 60      | 55,0    | 98,00                |

Groß-Messuhr  $\varnothing$  80 mm, Messbereich 50 mm, Ablesung 0,01 mm

Large dial indicator  $\varnothing$  80 mm, range 50 mm, reading 0,01 mm

- Genauigkeit nach Werksnorm
- Metallgehäuse
- Einspannschaft 8 h6
- Ziffernblatt durch Außenring drehbar im Etui
- accuracy according to works standard
- metal casing
- standard stem 8 h6
- dial face rotatable by outer ring in case



| Bestell-Nr.<br>Order-No. | Messbereich<br>Range mm | Ablesung<br>Reading mm | Genauigkeit<br>Accuracy $\mu\text{m}$ | Außenring<br>Bezel mm | A+B<br>mm | F<br>mm | G<br>mm | H<br>mm | Euro/St.<br>Euro/Pc. |
|--------------------------|-------------------------|------------------------|---------------------------------------|-----------------------|-----------|---------|---------|---------|----------------------|
| 01024006                 | 50                      | 0,01                   | 55                                    | 76                    | 177       | 34      | 58,5    | 70,0    | 120,00               |